

**PBJ**  
DESIGNHOUSE  
1968

# THE HIDE COLLECTION



# The Hide collection

*designed by Morten Svendsen*



Hide table, Artus chair, Oculus cabinets in Light oak lacq.



Morten Svendsen, owner of PBJ

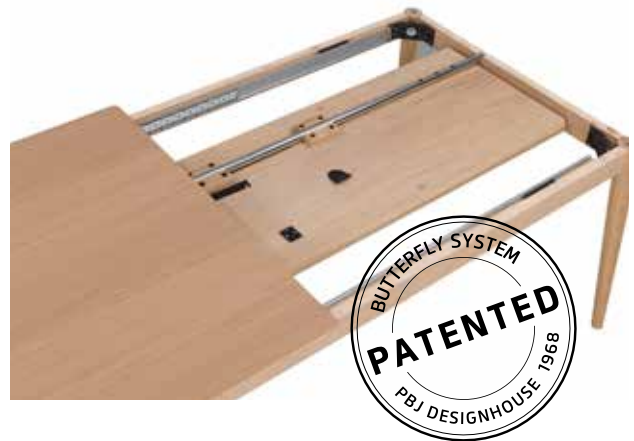
The Hide dining table is available as a fixed top as well as extendable.

Nicely rounded, solid legs with a nice detail at the upper end. If ordered with a butterfly leaf the top slides to one side to unfold the extension leaf.

Extension leaves to be ordered separately.

The Oculus range of sideboards, highboards and display cabinets, can also be ordered with matching Hide legs, the cabinets are veneered with rounded solid edges and mitre joints. Doors and drawers are with nicely recessed oval handles. All cabinets are also beautifully veneered at the back, so they can be free standing as well.

Frontpage:  
Hide table, Alius chair, Oculus cabinets in light oak lacq.



**Dining table**

no 725175 - L 175 W 95 H 75 cm  
 no 725220 - L 220 W 95 H 75 cm

**Butterfly extension**

no 725100 - L 100 W 95 cm

Rectangular dining table with possibility for patented butterfly extension at one end. 8 or 10 seats - extended 12 or 14 seats.

Butterfly Extension to be ordered separately.



Hide table, Titan veneer chair, Oculus cabinets in Light oak lacq.

# Oculus with Hide legs



### Oculus Glass Cabinet

no. 138093 with light  
no. 138094 without light

Glass cabinet with 2 glass shelves and LED lights controlled with on/of sensor and dimmer.

L 91 W 45 H 185 cm



### Oculus Highboard

no 138110

Highboard with 3 doors and 3 drawers. 1 shelf behind each door.

L 110 W 40 H 138 cm



### Oculus Sideboard 2

no 138120

Sideboard with 1 door and 3 drawers. 1 shelf behind the door.

L 118 W 45 H 75 cm



Oculus 3XL sideboard, with Hide legs, in light oak lacq.



**Oculus Sideboard 3**

no 138176

Sideboard with 2 doors and 3 drawers. 1 shelf behind each door.

L 176 W 45 H 75 cm



**Oculus 4XL Sideboard**

no 138234

Sideboard with 4 doors and 2 large drawers. 1 long shelf behind each 2 doors.

L 233 W 45 H 90 cm



**Oculus Sideboard 4**

no 138233

Sideboard with 3 doors and 3 drawers. 1 shelf behind each door.

L 233 W 45 H 75 cm



**Oculus 4XL Sideboard**

no 138235

Sideboard with 4 doors. 1 long shelf behind each 2 doors.

L 233 W 45 H 90 cm



**Oculus 3XL Sideboard**

no 138178

Sideboard with 3 doors and 1 long drawer. 1 long shelf behind 2 doors, 1 shelf behind 1 door.

L 176 W 45 H 90 cm

Other leg designs are available - please ask the sales staff for details.



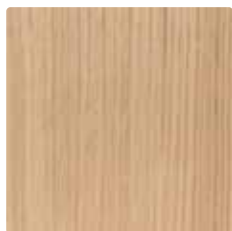
Oculus glass cabinet, with Hide legs, in light oak lacq.

# Colours and materials

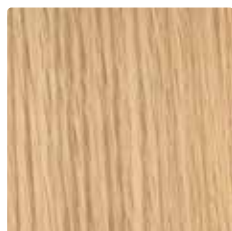
The Hide collection is available in a wide variety of wood finishes.  
The tabletops and sideboard/highboard fronts are also available in a wide range of laminates in different colours.

## WOOD

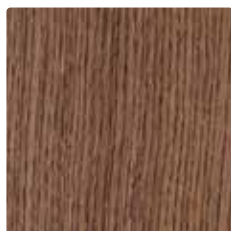
### VENEER



043 Light oak lacq



045 Oak natural lacq



047 Dark oak lacq



049 Smoked oak lacq

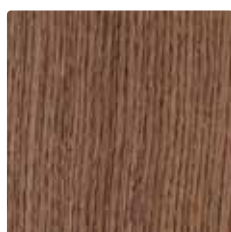
SOLID (ONLY DINING TABLES - BUTTERFLY EXTENSION ALWAYS IN VENEER OR LAMINATE).



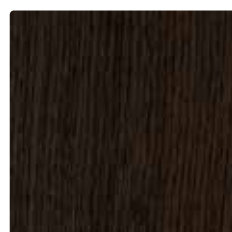
052 Bianco oak oil



056 Oak natural oil



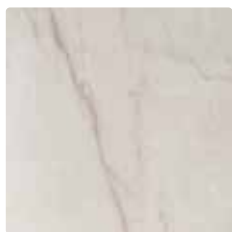
057 Dark oak oil



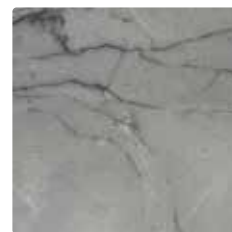
059 Smoked oak oil

## LAMINATE

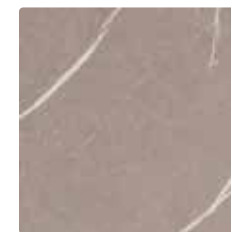
### MARBLE



301 Yule white



302 Yule grey

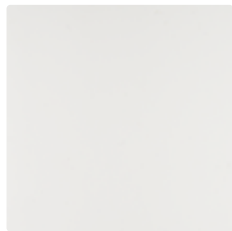


303 Pulpis light



304 Pulpis dark

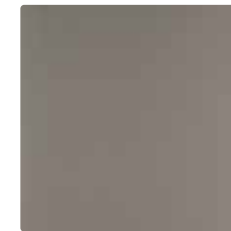
### FENIX



201 Bianco white



204 Deep black



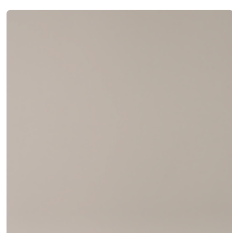
210 Dark warm grey



219 Verde



222 Grigio



206 Light grey

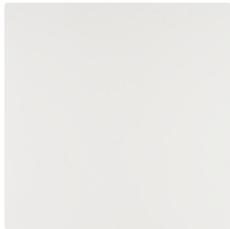


207 Grey brown

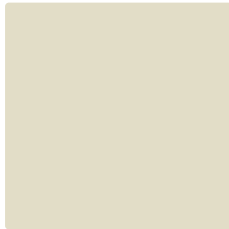


Hide table, Tonus chair, Oculus cabinets in light oak lacq.

HPL (HIGH PRESSURE LAMINATE)



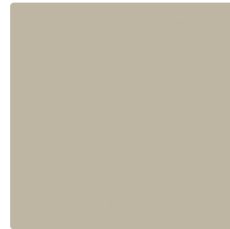
101 White



102 Pomice



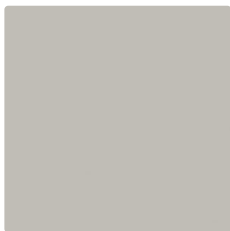
103 Otter



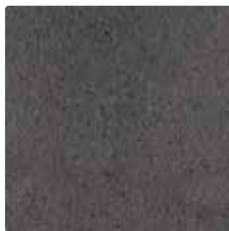
104 Oyster Grey



105 Possum



106 Iron



184 Nero Stone

See [pbjdesignhouse.com](http://pbjdesignhouse.com) or price list for availability of specific products.

The paper used for this brochure is FSC® certified.

Home is a place to belong.  
Filled with love, harmony, joy ... being you.

---

Proud craftsmanship with a critical  
eye for design and quality.

A family-owned Danish company with our own  
production company. We have many years of experience in  
refining the details and meeting the customers' requirements.

DANISH DESIGN SINCE 1968



**PBJ Designhouse**  
Skovvænget 2  
DK-7860 Spøttrup  
Denmark

[pbj@pbjdesignhouse.com](mailto:pbj@pbjdesignhouse.com)  
**[pbjdesignhouse.com](http://pbjdesignhouse.com)**

Your specialist dealer:

*The brochure is subject to technical changes and possible printing errors.*